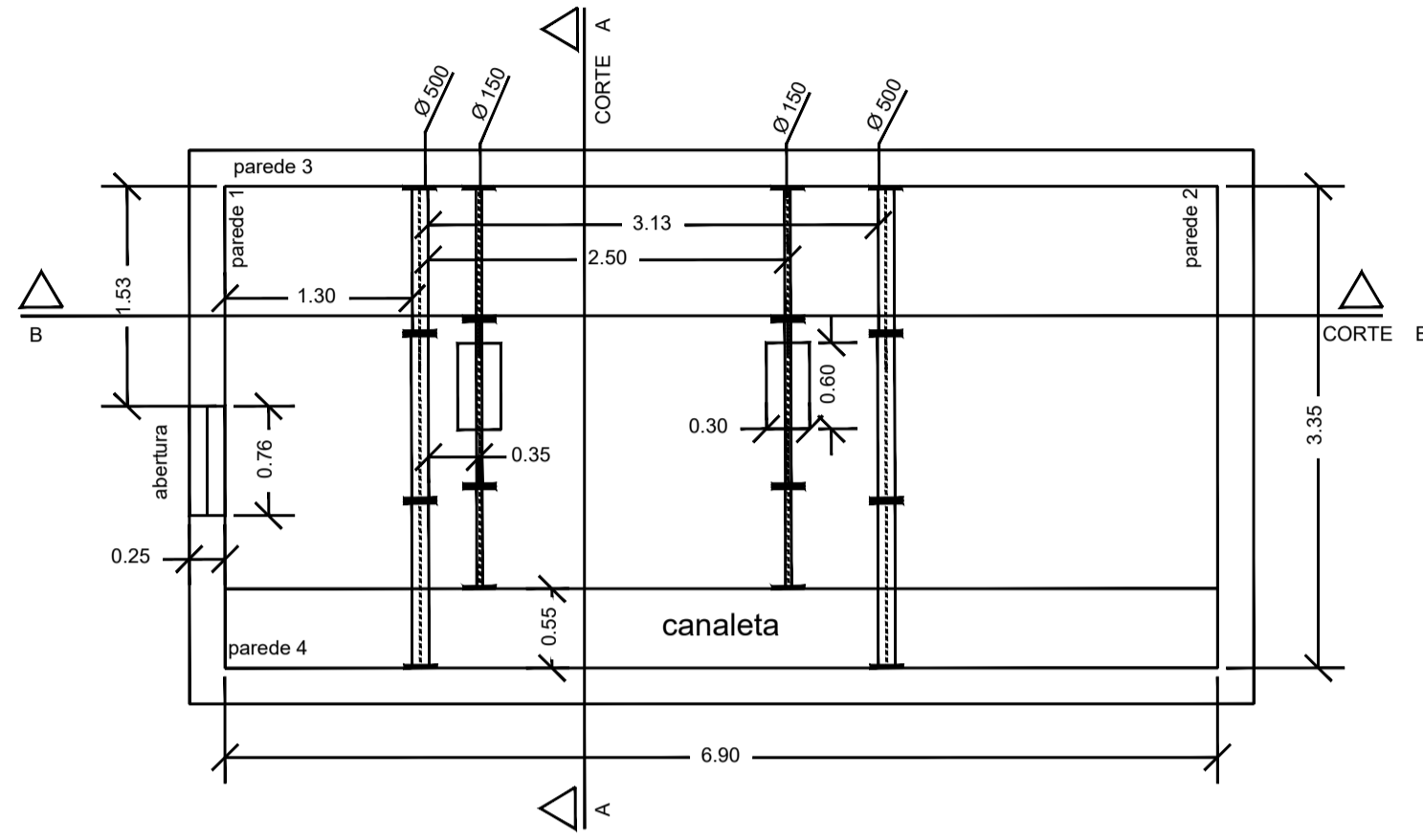
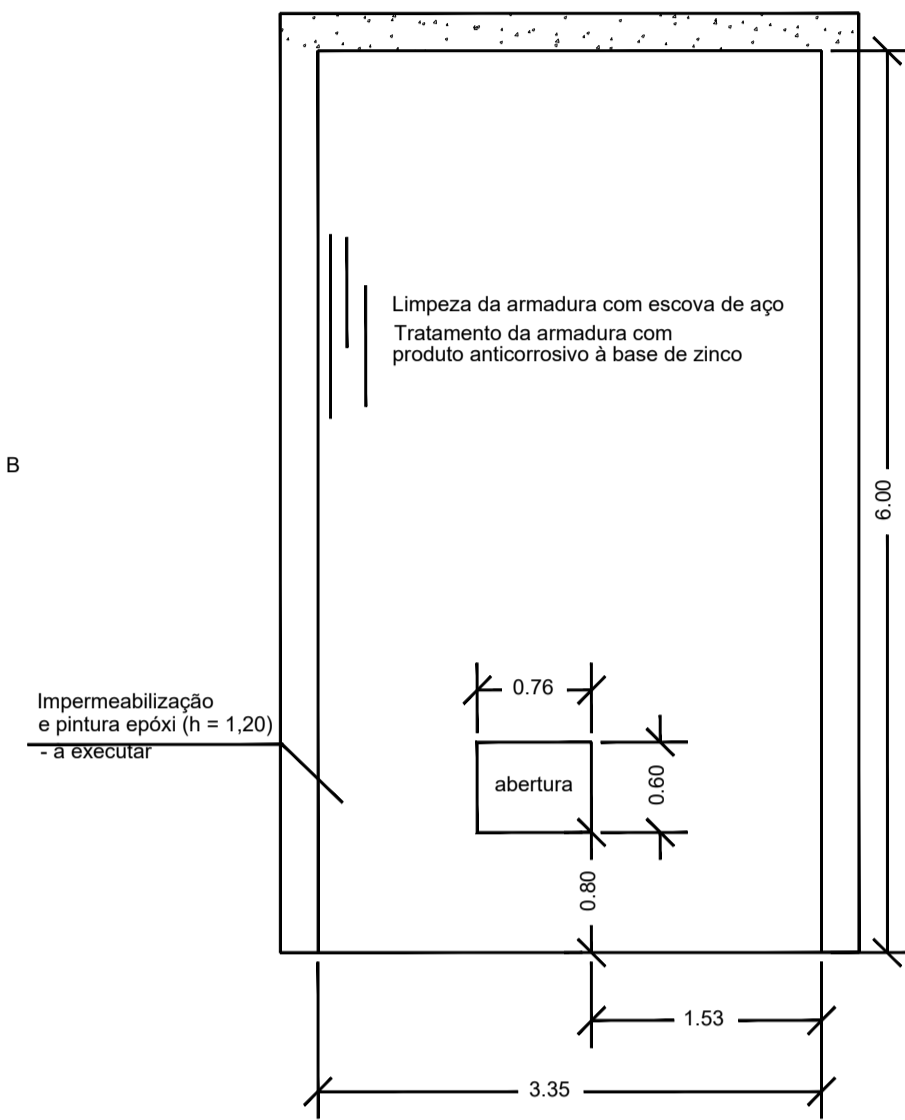


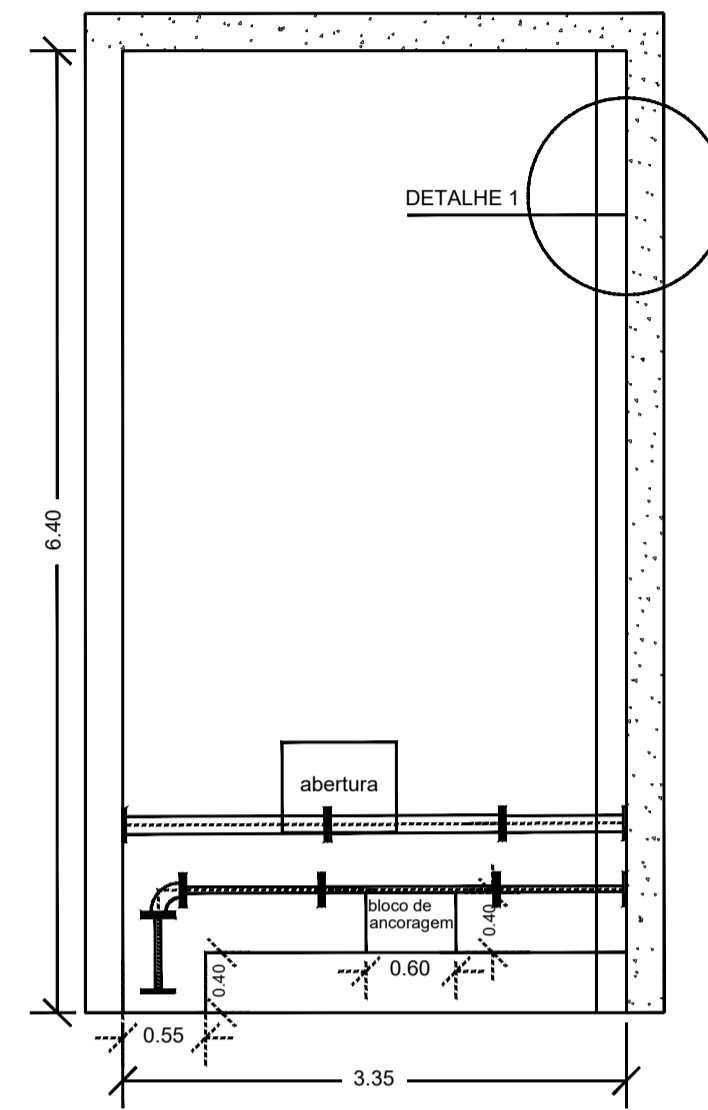
PLANTA BAIXA
ESC=1:50



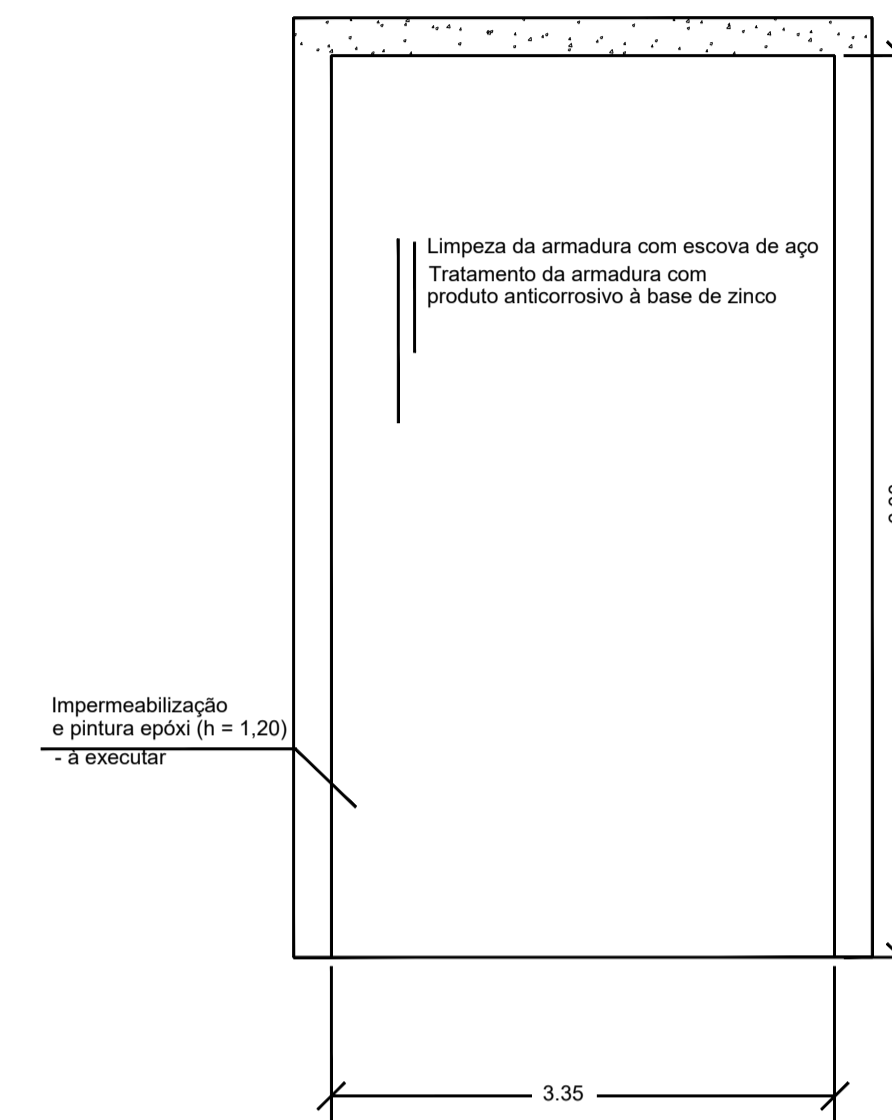
PAREDE 1
ESC=1:50



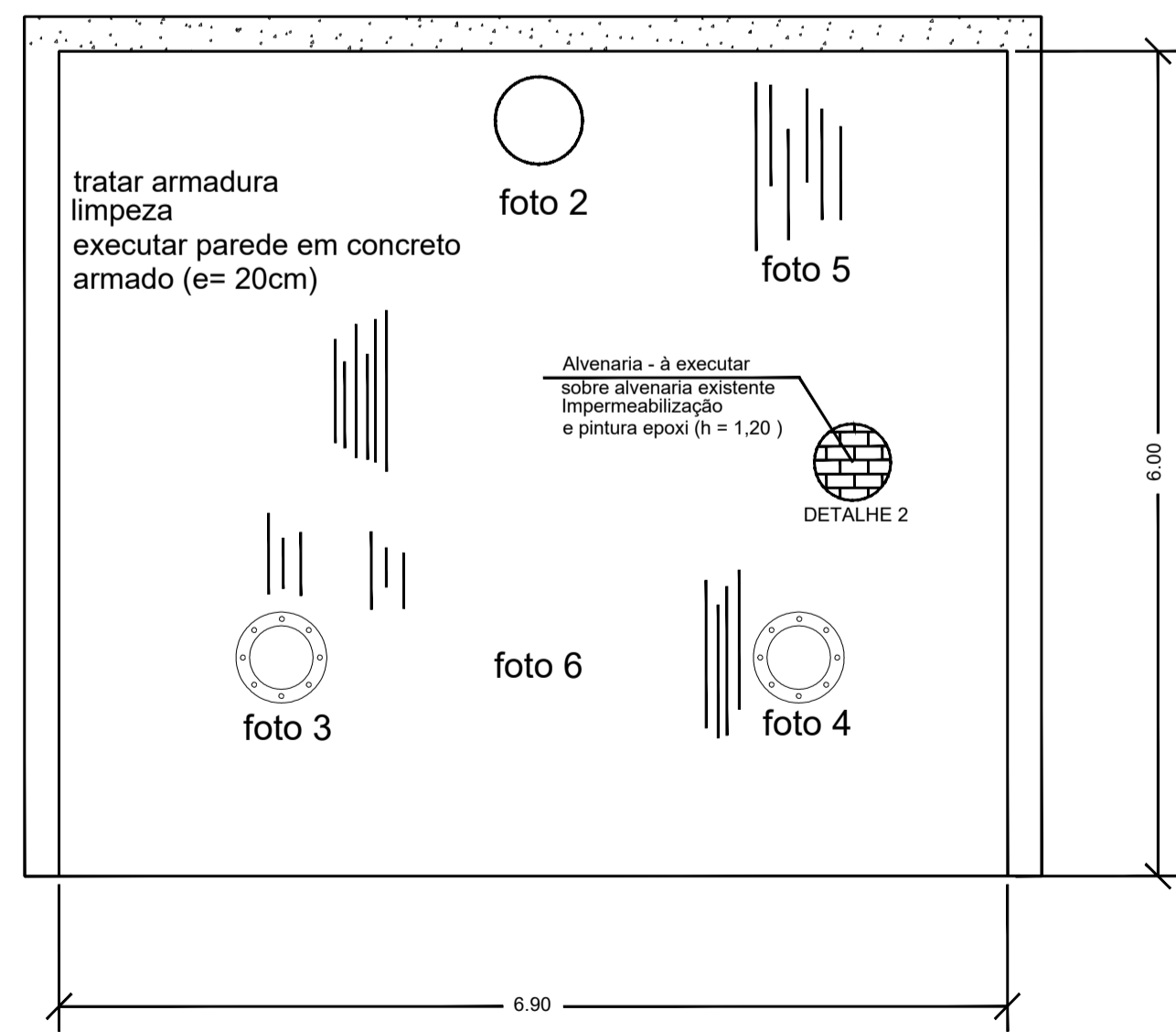
CORTE A-A
ESC=1:50



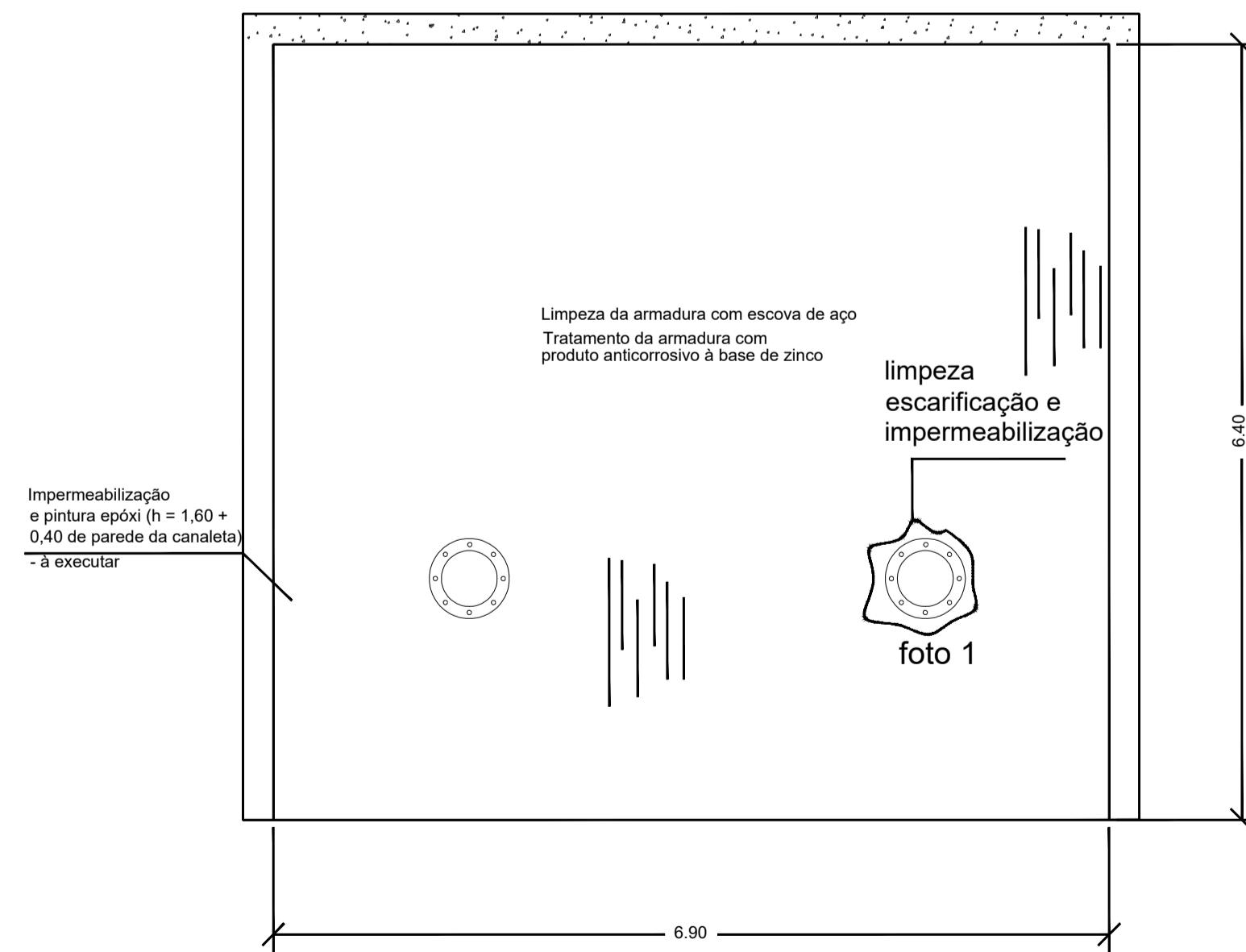
PAREDE 2
ESC=1:50



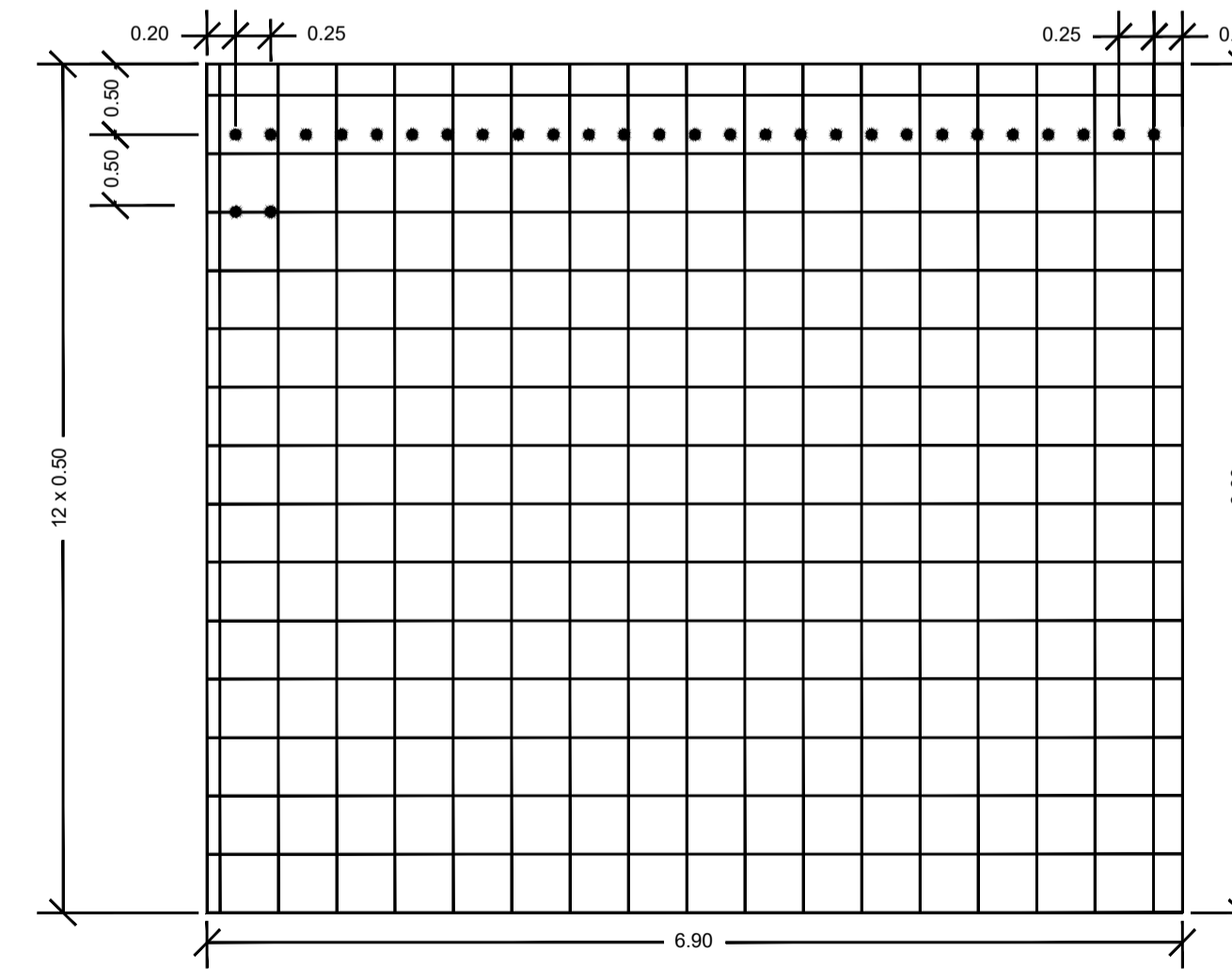
PAREDE 3 - CORTE B-B
ESC=1:50



PAREDE 4
ESC=1:50

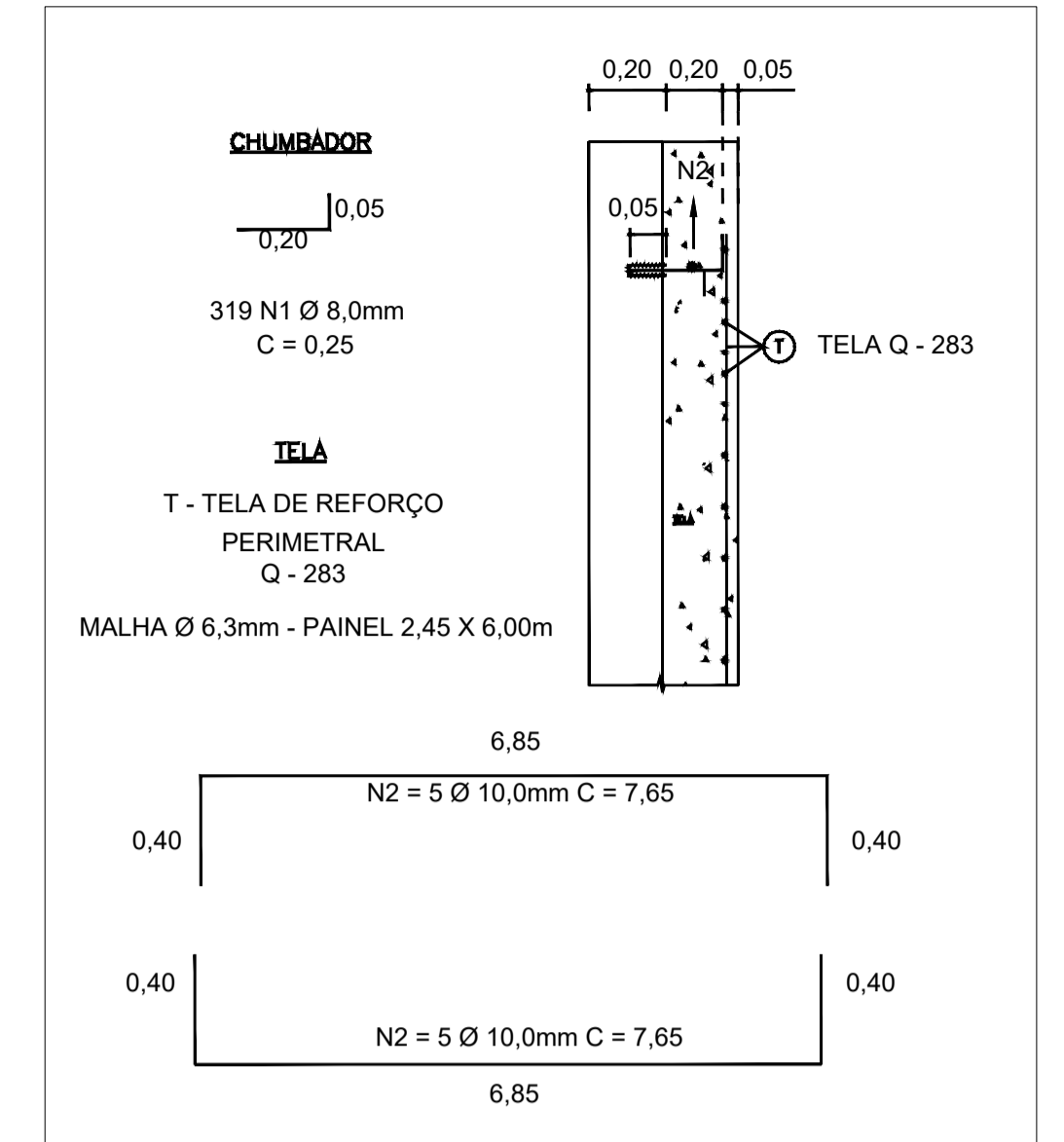


DETALHE 2
ESC=1:50



PAREDE 3
À EXECUTAR

DETALHE 1
ESC=1:50



FOTOS DO LOCAL

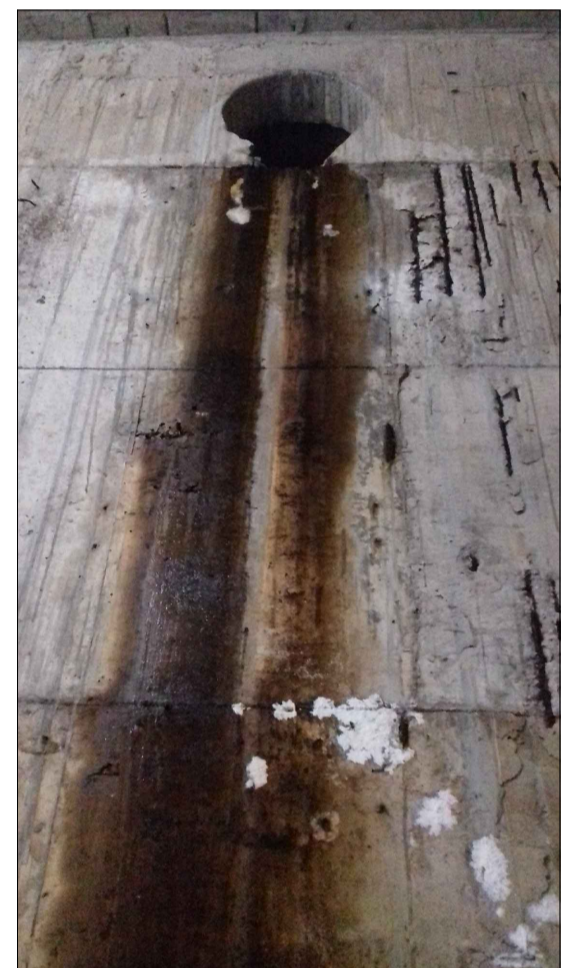
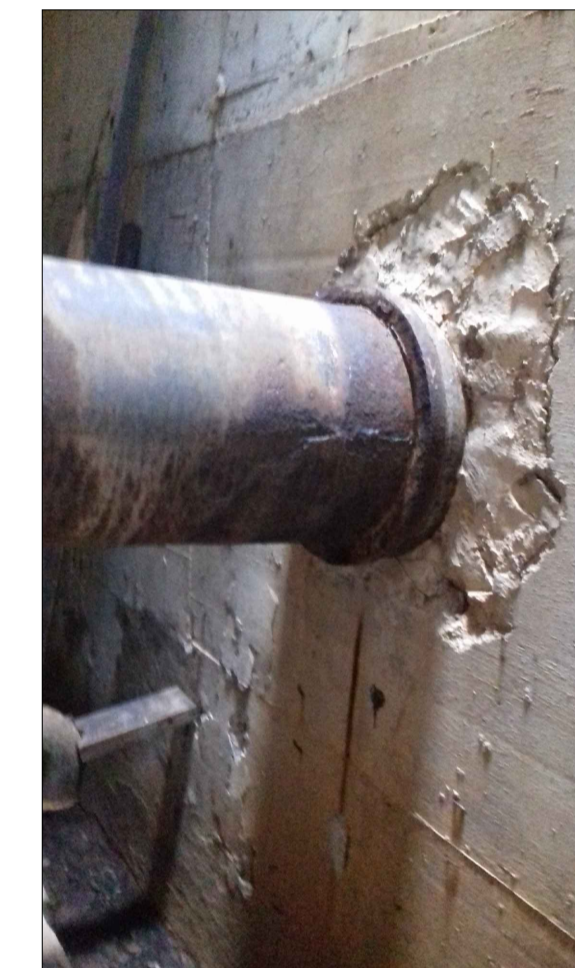


FOTO 1

FOTO 2

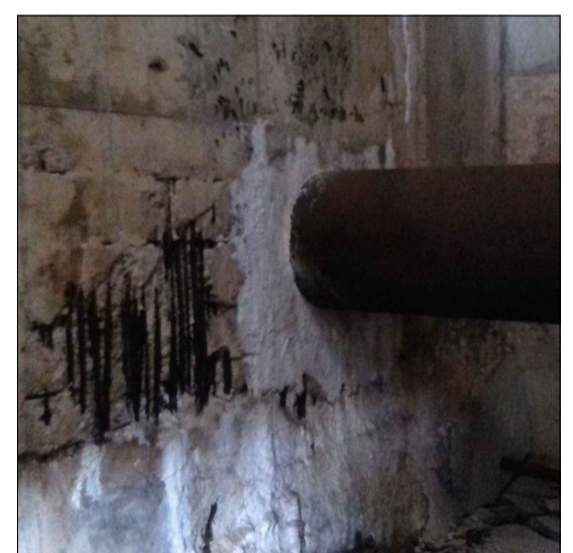
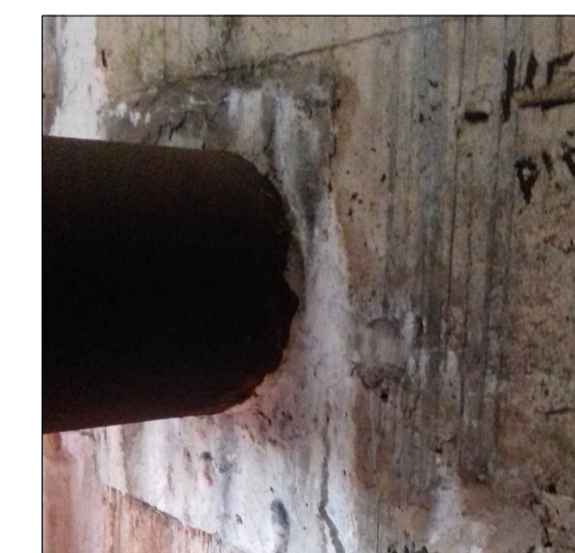


FOTO 3

FOTO 4

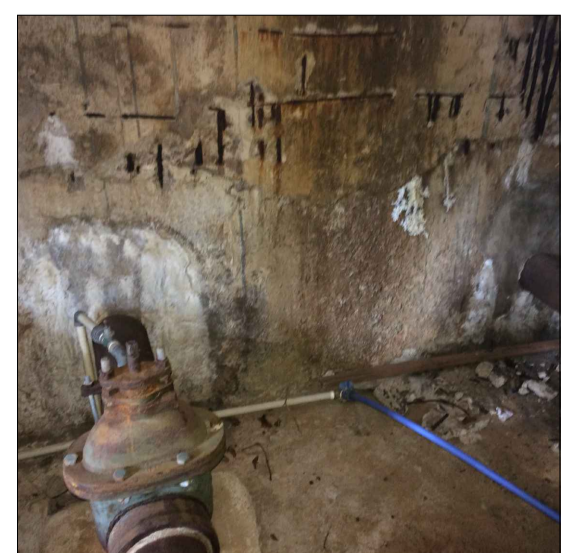
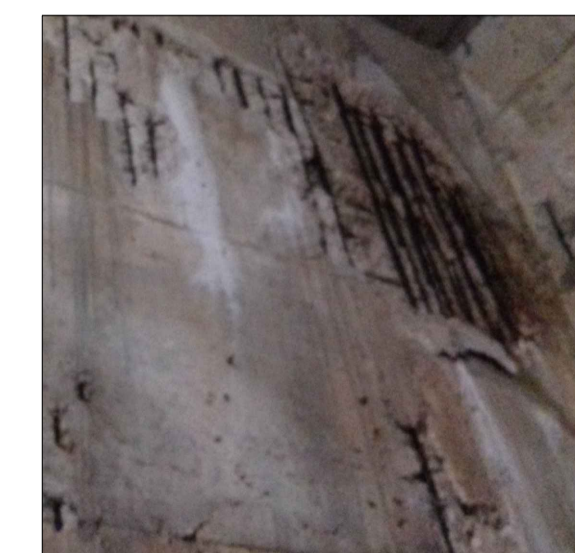


FOTO 5

FOTO 6



DAE S/A - ÁGUA E ESGOTO
Rod. Vereador Gerardo Dias, nº 1500 - Jundiá - SP
www.daejundiai.com.br

ASSUNTO: SERVIÇOS DE IMPERMEABILIZAÇÃO, TRATAMENTO DE ARMADURA E PINTURA			
OBRA:	MANUTENÇÃO CORRETIVA - R12	FOLHA:	ÚNICA
END.:	RUA GUILHERME SCHULLER, 400 - JARDIM PLANALTO - JUNDIAÍ/SP	DATA:	28/01/2020
RES. TÉCNICO:	MARIO A. STERNHAUSER	DESENHO:	SOC
ORÇÁ:	060.150.317.1/D	LEVANT. TOPOG.:	GERÊNCIA: SOC
APROVAÇÃO:		DESENHO VINCULADO:	REVISÃO: 00